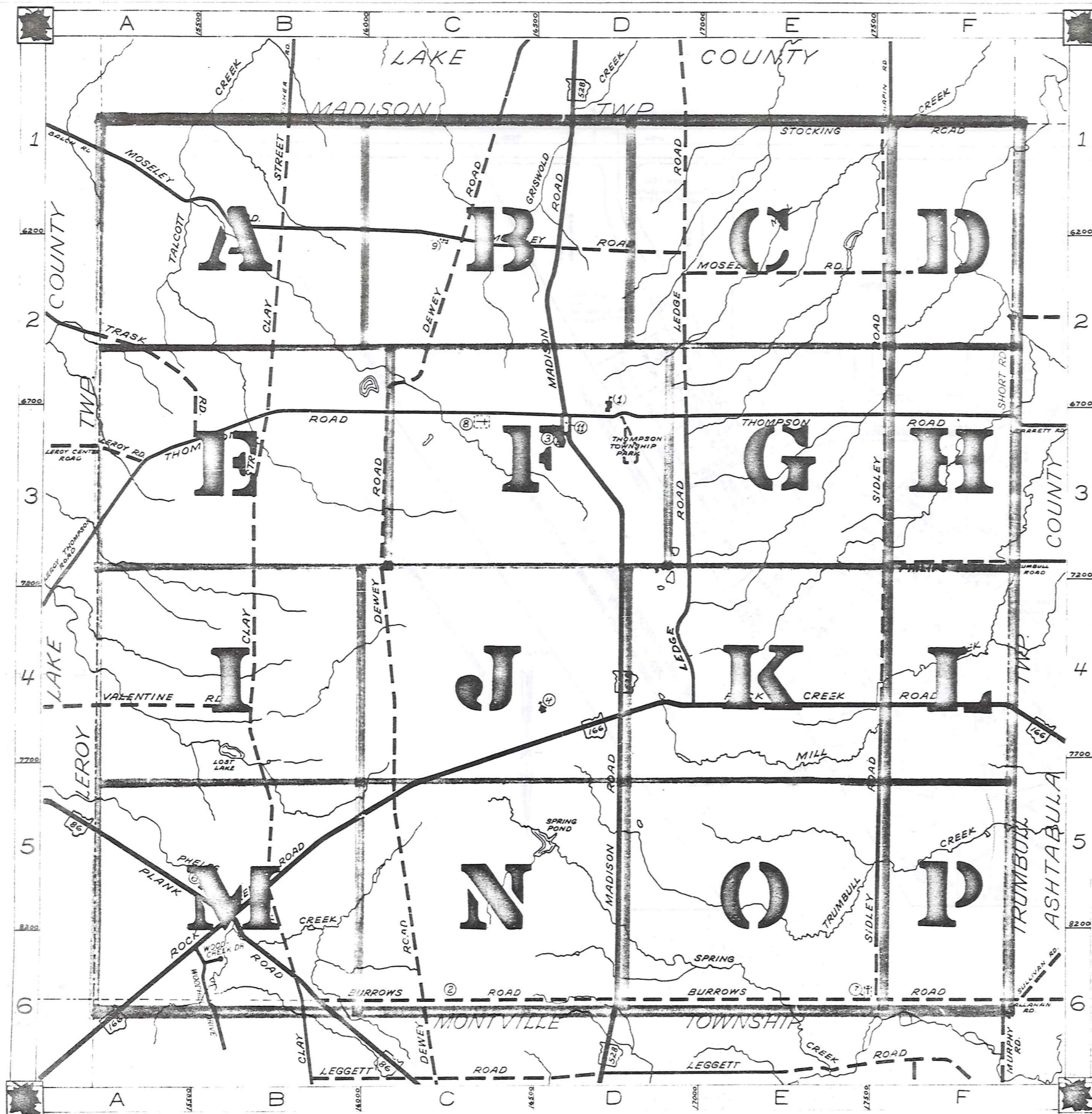


ROAD INDEX

412

ROCK CREEK RD A6-F4



A	I cont	R	ROCK CREEK RD A6-F4
	J		
B	BURROWS RD. B6-F6	S	SHORT RD F2-F3 SIDLEY RD F1-F6 STOCKING RD D1-F1
	K		
C	CLAY STREET B1-B6	T	THOMPSON RD. A3-F3 TRASK RD. A2-A3
	L		
	LEDGE RD. D1-D4 LEROY RD. A3		
D	DEWEY RD. C1-C6	U	
		M	MADISON RD. D1-D6 MOSELEY RD. A1-F2
E		V	VALENTINE RD. A4-B4
		Z	
F		W	WOODCREEK DR. B6 WOODHILL DR. B6
		X	
G		O	
H	PHILIPS RD. F3 PLANK RD. A5-B6	Y	
		Z	
I		Q	

- ① LEDGEMONT HIGH SCHOOL
- ② LEDGEMONT ELEM SCHOOL
- ③ THOMPSON METHODIST CHURCH
- ④ ST. PATRICKS CHURCH
- ⑤ GRACE EVANGELICAL LUTHERAN CH. CEMETERY
- ⑥ GRACE EVANGELICAL LUTHERAN CH. CEMETERY
- ⑦
- ⑧ MAPLE GROVE CEMETERY
- ⑨ CEMETERY
- ⑩ THOMPSON VOL FIRE DEPT.
- ⑪ THOMPSON TOWN HALL

THOMPSON TOWNSHIP

SCALE: 1"=2000'

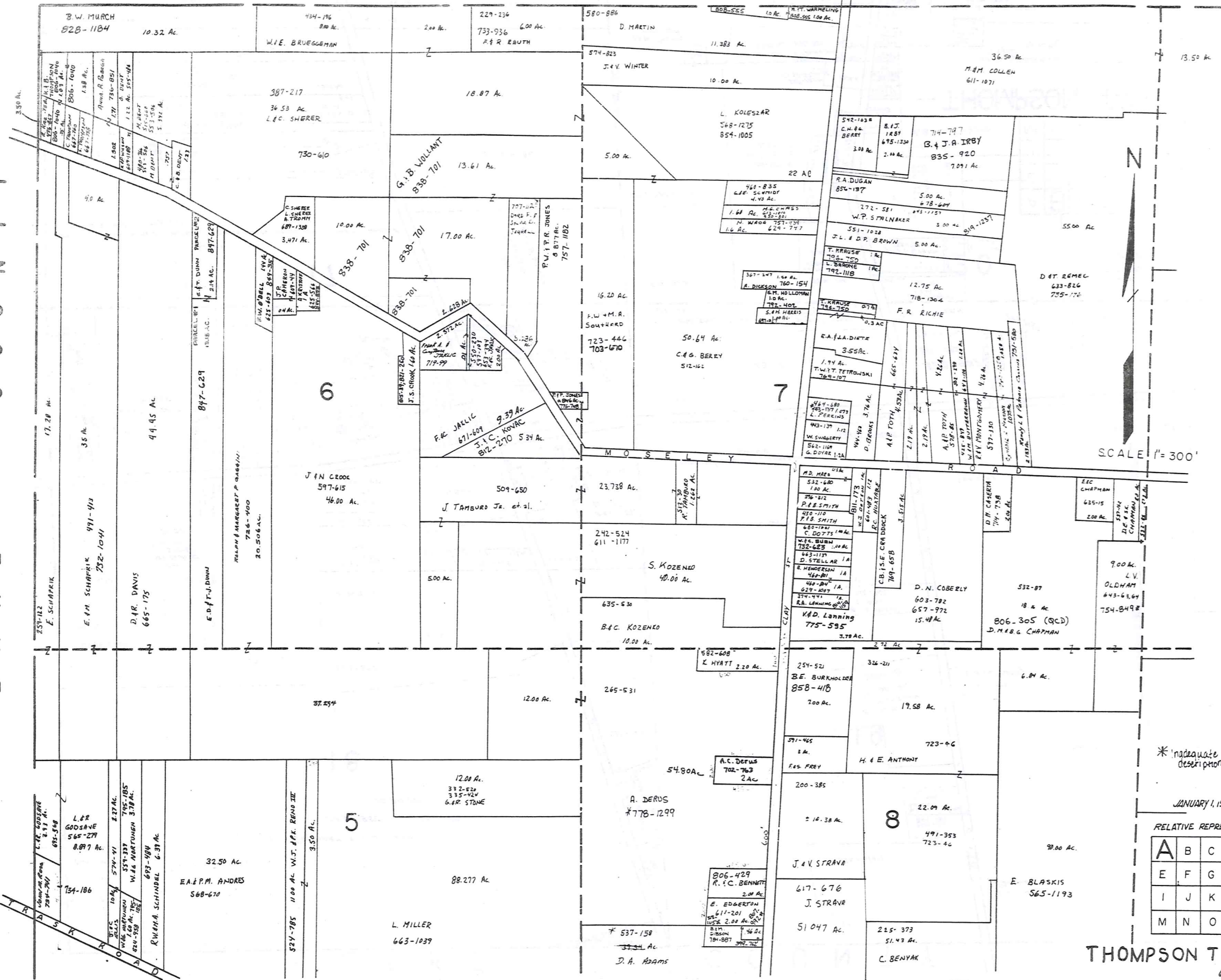
ROBERT L. PHILLIPS,
GEAUGA COUNTY ENGINEER

--- UNPAVED ROADS
--- TOWNSHIP LINE
--- PAVED ROADS
--- COUNTY LINE

L A K E

C O U N T Y

L A K E C O U N T Y



* Inadequate description

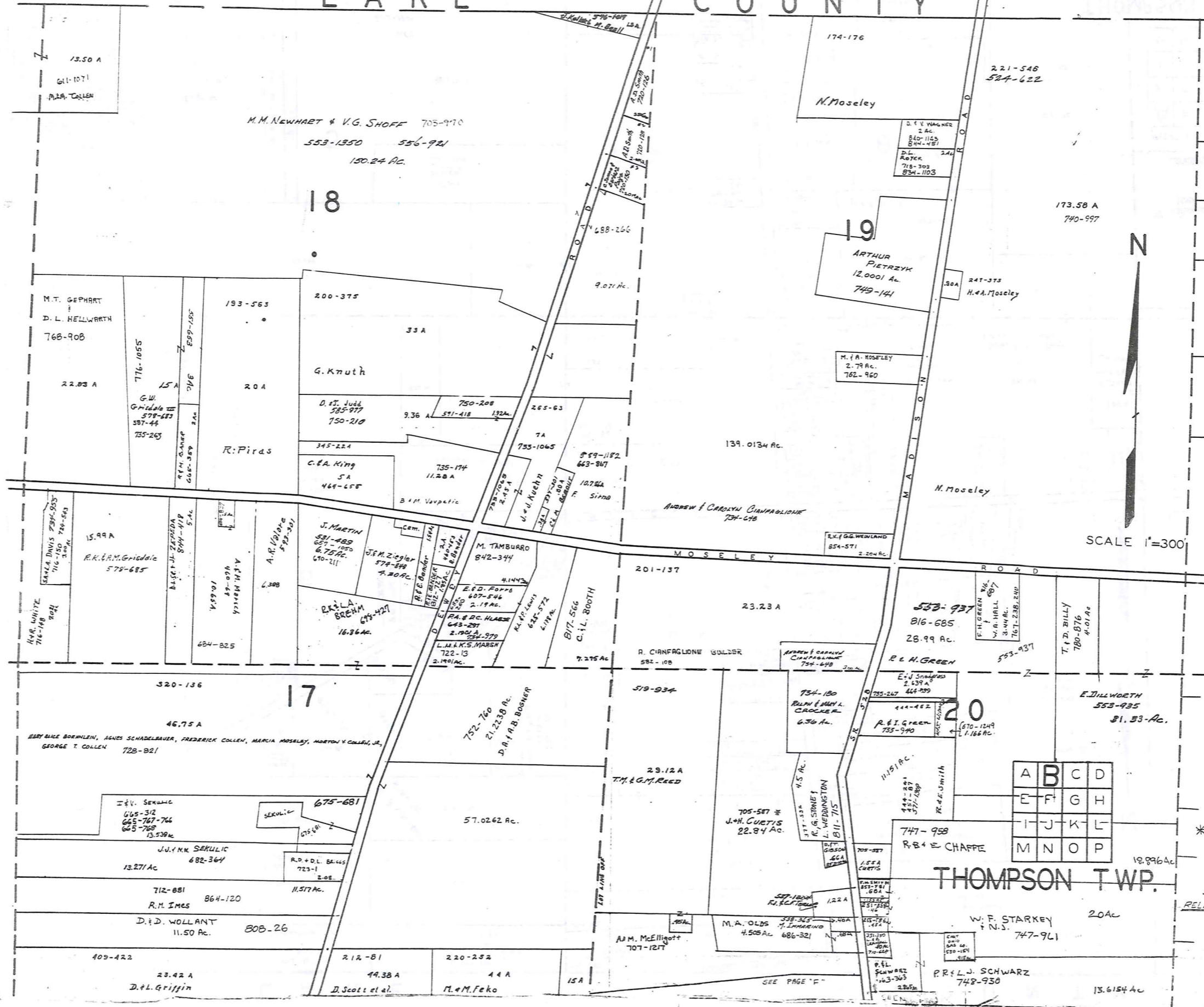
JANUARY 1, 1991

RELATIVE REPRESENTATION

A	B	C	D
E	F	G	H
I	J	K	L
M	N	O	P

L A K E C O U N T Y

414



SCALE 1"=300'

A	B	C	D
E	F	G	H
I	J	K	L
M	N	O	P

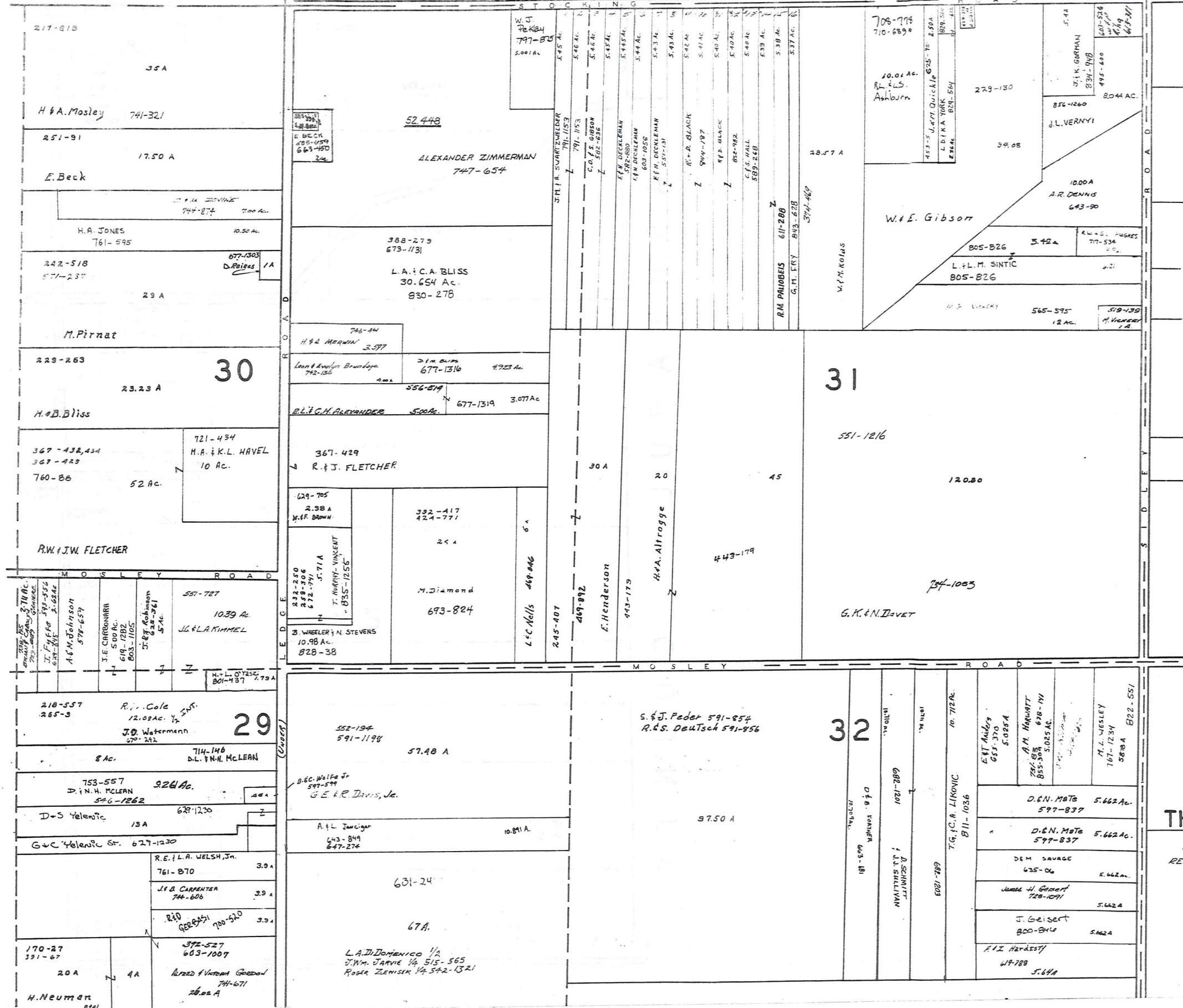
* Inadequate description

JANUARY 1, 1994
RELATIVE REPRESENTATION

THOMPSON TWP.

SEE PAGE "F"

L A K E C O U N T Y



SCALE 1" = 300'

A	B	C	D
E	F	G	H
I	J	K	L
M	N	O	P

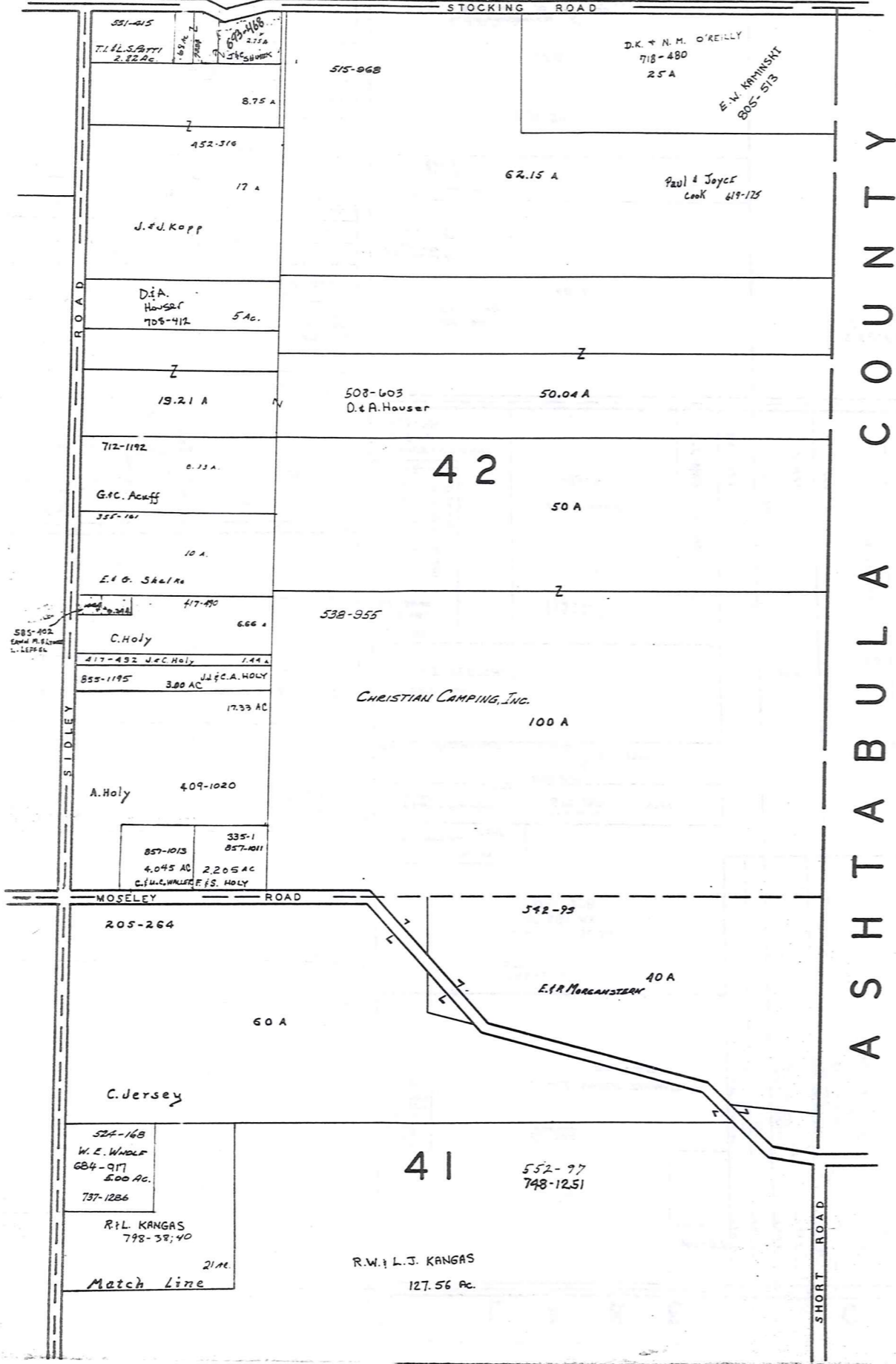
THOMPSON TWP

JANUARY 1, 1991
RELATIVE REPRESENTATION

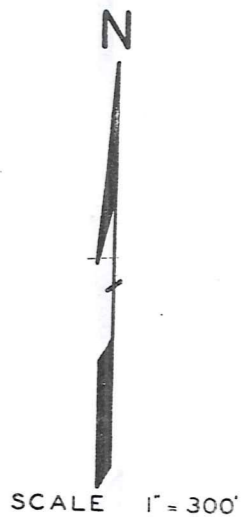
* Inadequate description

L A K E C O U N T Y

416



A S H T A B U L A C O U N T Y



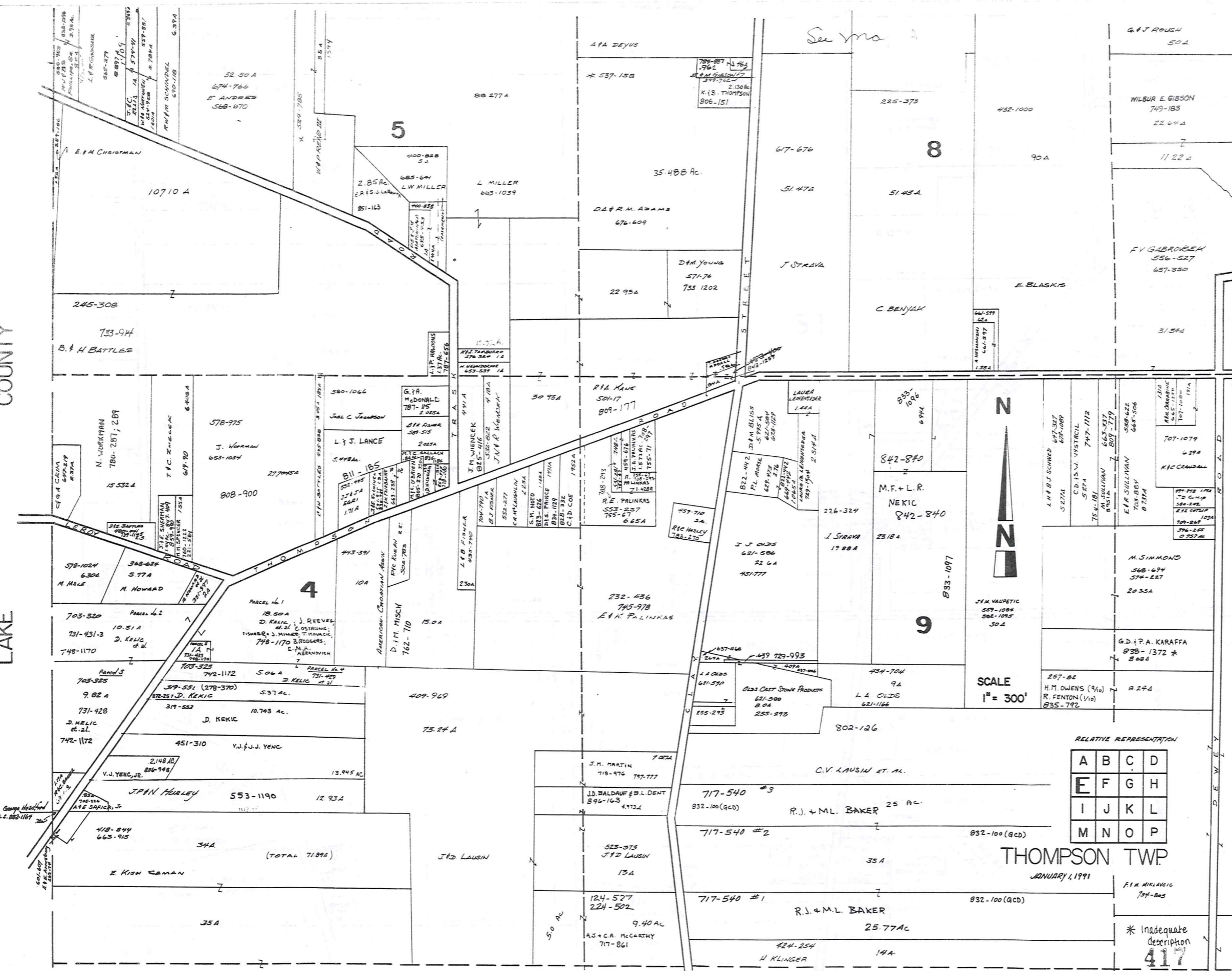
JAN. 1, 1991.
RELATIVE REPRESENTATION

A	B	C	D
E	F	G	H
I	J	K	L
M	N	O	P

THOMPSON TWP.
Match Line

COUNTY

LAKE



SCALE
1" = 300'

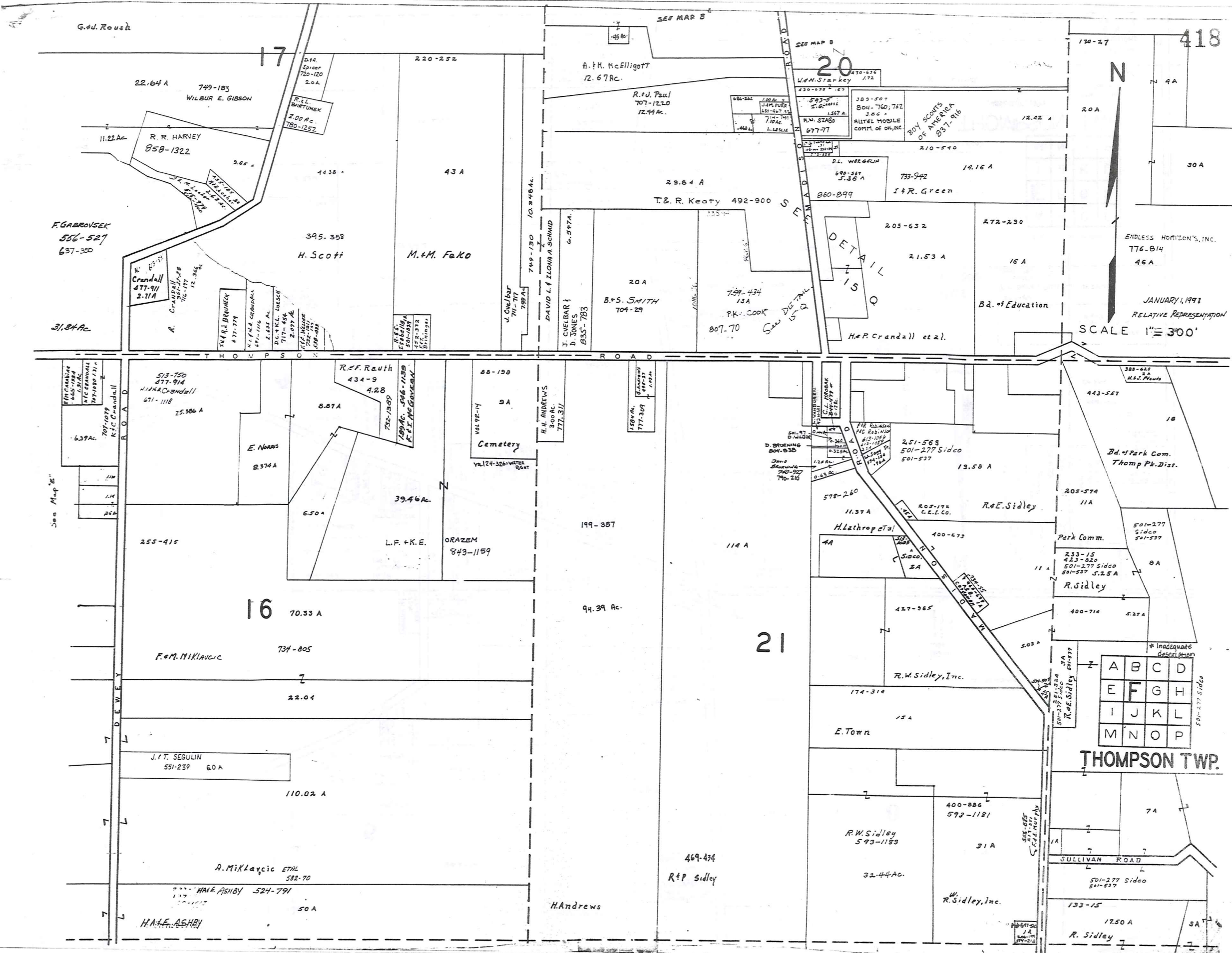
RELATIVE REPRESENTATION

A	B	C	D
E	F	G	H
I	J	K	L
M	N	O	P

THOMPSON TWP.
JANUARY 4, 1991

F.M. MCKAY
734-805

* Inadequate Description
417



N

SCALE 1" = 300'

JANUARY, 1993
RELATIVE REPRESENTATION

THOMPSON TWP.

A	B	C	D
E	F	G	H
I	J	K	L
M	N	O	P

F. GABROVSEK
556-527
637-350

31.34 Ac

See Map 21

DETAILS
Q

21

16

70.33 A

734-805

22.04

110.02 A

582-70

50 A

39.46 Ac

L.F. + K.E.

ORAZEM
843-1159

94.39 Ac

H. Andrews

469-434
R & P Sidley

174-314

E. Town

R.W. Sidley
593-1183

32.44 Ac

R. Sidley, Inc.

17.50 A

R. Sidley

* Inadequate description
501-277 Sidco

233-15

423-820

501-277 Sidco

501-537 S.2.5 A

R. Sidley

400-714

5.25 A

11 A

Park Comm.

501-277 Sidco

501-537

8 A

Bd. of Park Com.
Thomp Pk. Dist.

205-574

11 A

R. & E. Sidley

205-194

C.C.L. Co.

400-673

4 A

H. Athrop et al

11.37 A

578-260

0.43 Ac

D. Browning
804-830

3325 Ac

1/2 Ac

1/2 Ac

1/2 Ac

1/2 Ac

1/2 Ac

1/2 Ac

1/2 Ac

1/2 Ac

1/2 Ac

1/2 Ac

1/2 Ac

1/2 Ac

1/2 Ac

1/2 Ac

1/2 Ac

1/2 Ac

1/2 Ac

1/2 Ac

1/2 Ac

1/2 Ac

1/2 Ac

1/2 Ac

1/2 Ac

1/2 Ac

1/2 Ac

1/2 Ac

1/2 Ac

1/2 Ac

1/2 Ac

1/2 Ac

1/2 Ac

1/2 Ac

1/2 Ac

1/2 Ac

1/2 Ac

1/2 Ac

1/2 Ac

1/2 Ac

1/2 Ac

1/2 Ac

1/2 Ac

1/2 Ac

1/2 Ac

1/2 Ac

1/2 Ac

1/2 Ac

1/2 Ac

1/2 Ac

1/2 Ac

1/2 Ac

1/2 Ac

1/2 Ac

1/2 Ac

1/2 Ac

1/2 Ac

1/2 Ac

1/2 Ac

1/2 Ac

1/2 Ac

1/2 Ac

1/2 Ac

1/2 Ac

1/2 Ac

1/2 Ac

1/2 Ac

1/2 Ac

1/2 Ac

1/2 Ac

1/2 Ac

1/2 Ac

1/2 Ac

1/2 Ac

1/2 Ac

1/2 Ac

1/2 Ac

1/2 Ac

1/2 Ac

1/2 Ac

1/2 Ac

1/2 Ac

1/2 Ac

1/2 Ac

1/2 Ac

1/2 Ac

1/2 Ac

1/2 Ac

1/2 Ac

1/2 Ac

1/2 Ac

1/2 Ac

1/2 Ac

1/2 Ac

1/2 Ac

1/2 Ac

1/2 Ac

1/2 Ac

1/2 Ac

1/2 Ac

1/2 Ac

1/2 Ac

1/2 Ac

1/2 Ac

1/2 Ac

1/2 Ac

1/2 Ac

1/2 Ac

1/2 Ac

1/2 Ac

1/2 Ac

1/2 Ac

1/2 Ac

1/2 Ac

1/2 Ac

1/2 Ac

1/2 Ac

1/2 Ac

1/2 Ac

1/2 Ac

1/2 Ac

1/2 Ac

1/2 Ac

1/2 Ac

1/2 Ac

1/2 Ac

1/2 Ac

1/2 Ac

1/2 Ac

1/2 Ac

1/2 Ac

1/2 Ac

1/2 Ac

1/2 Ac

1/2 Ac

1/2 Ac

1/2 Ac

1/2 Ac

1/2 Ac

1/2 Ac

1/2 Ac

1/2 Ac

1/2 Ac

1/2 Ac

1/2 Ac

1/2 Ac

1/2 Ac

1/2 Ac

1/2 Ac

1/2 Ac

1/2 Ac

1/2 Ac

1/2 Ac

1/2 Ac

1/2 Ac

1/2 Ac

1/2 Ac

1/2 Ac

1/2 Ac

1/2 Ac

1/2 Ac

1/2 Ac

1/2 Ac

1/2 Ac

1/2 Ac

1/2 Ac

1/2 Ac

1/2 Ac

1/2 Ac

1/2 Ac

1/2 Ac

1/2 Ac

1/2 Ac

1/2 Ac

1/2 Ac

1/2 Ac

1/2 Ac

1/2 Ac

1/2 Ac

1/2 Ac

1/2 Ac

1/2 Ac

1/2 Ac

1/2 Ac

1/2 Ac

1/2 Ac

1/2 Ac

1/2 Ac

1/2 Ac

1/2 Ac

1/2 Ac

1/2 Ac

1/2 Ac

1/2 Ac

1/2 Ac

1/2 Ac

1/2 Ac

1/2 Ac

1/2 Ac

1/2 Ac

1/2 Ac

1/2 Ac

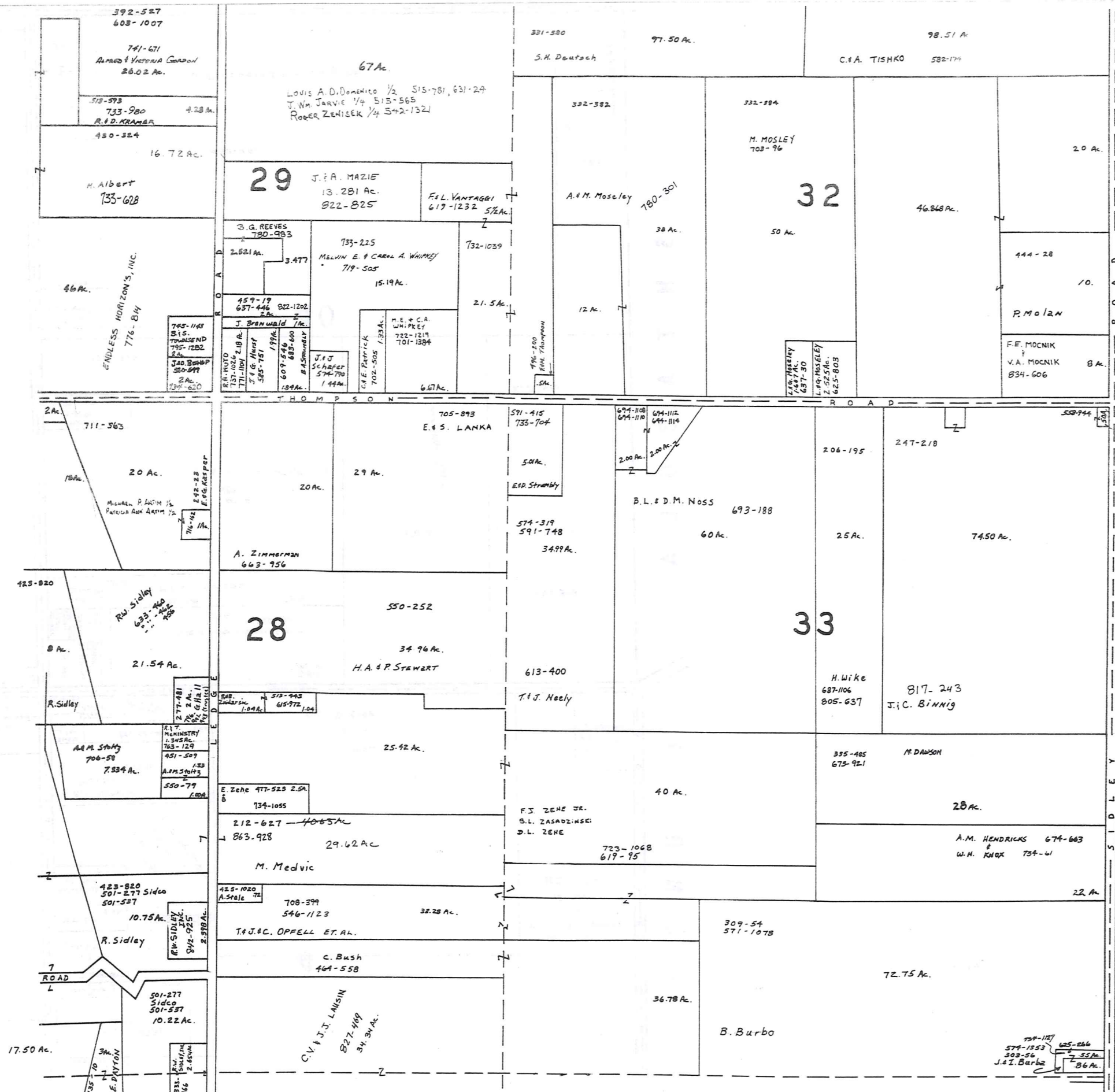
1/2 Ac

1/2 Ac

1/2 Ac

1/2 Ac

1/2 Ac



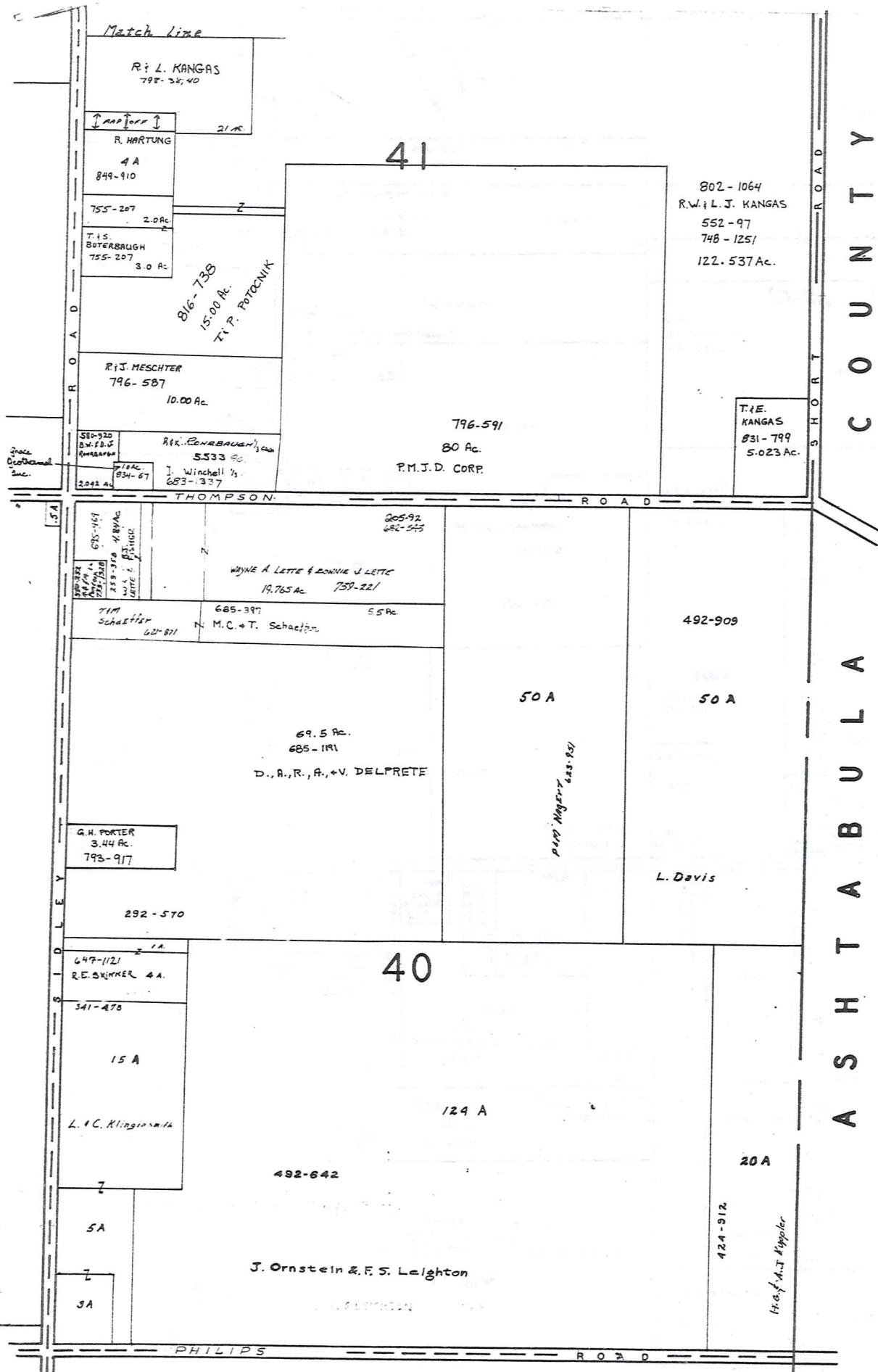
SCALE 1" = 300'

A	B	C	D
E	F	G	H
I	J	K	L
M	N	O	P

THOMPSON TWP.

JANUARY 1, 1991
RELATIVE REPRESENTATION

* Inadequate description



Match Line 420

ASHTABULLA COUNTY



SCALE 1" = 300'

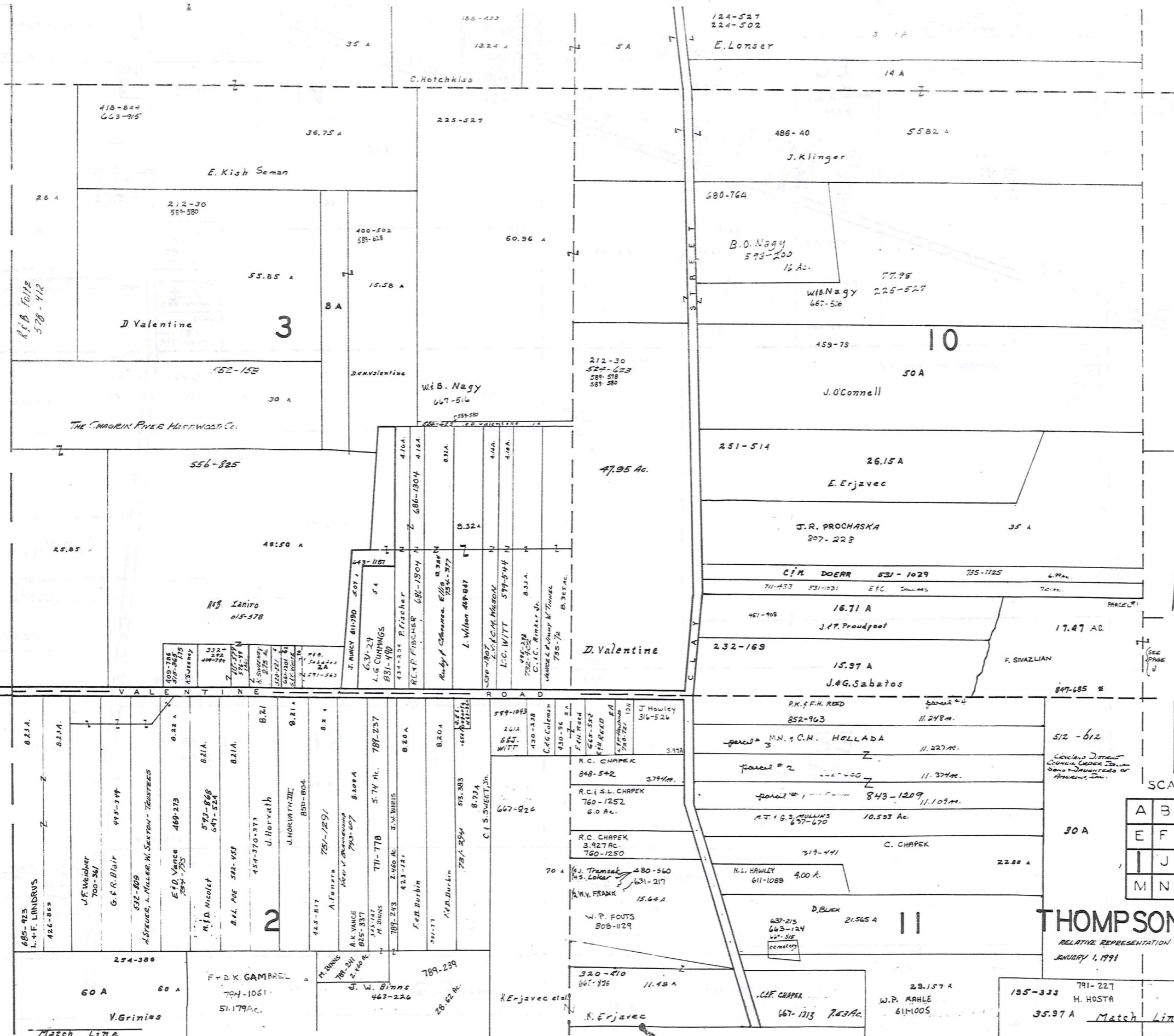
JANUARY 1, 1994
RELATIVE REPRESENTATION

A	B	C	D
E	F	G	H
I	J	K	L
M	N	O	P

THOMPSON TWP.

COUNTY

LAKELAKE



* Inadequate description

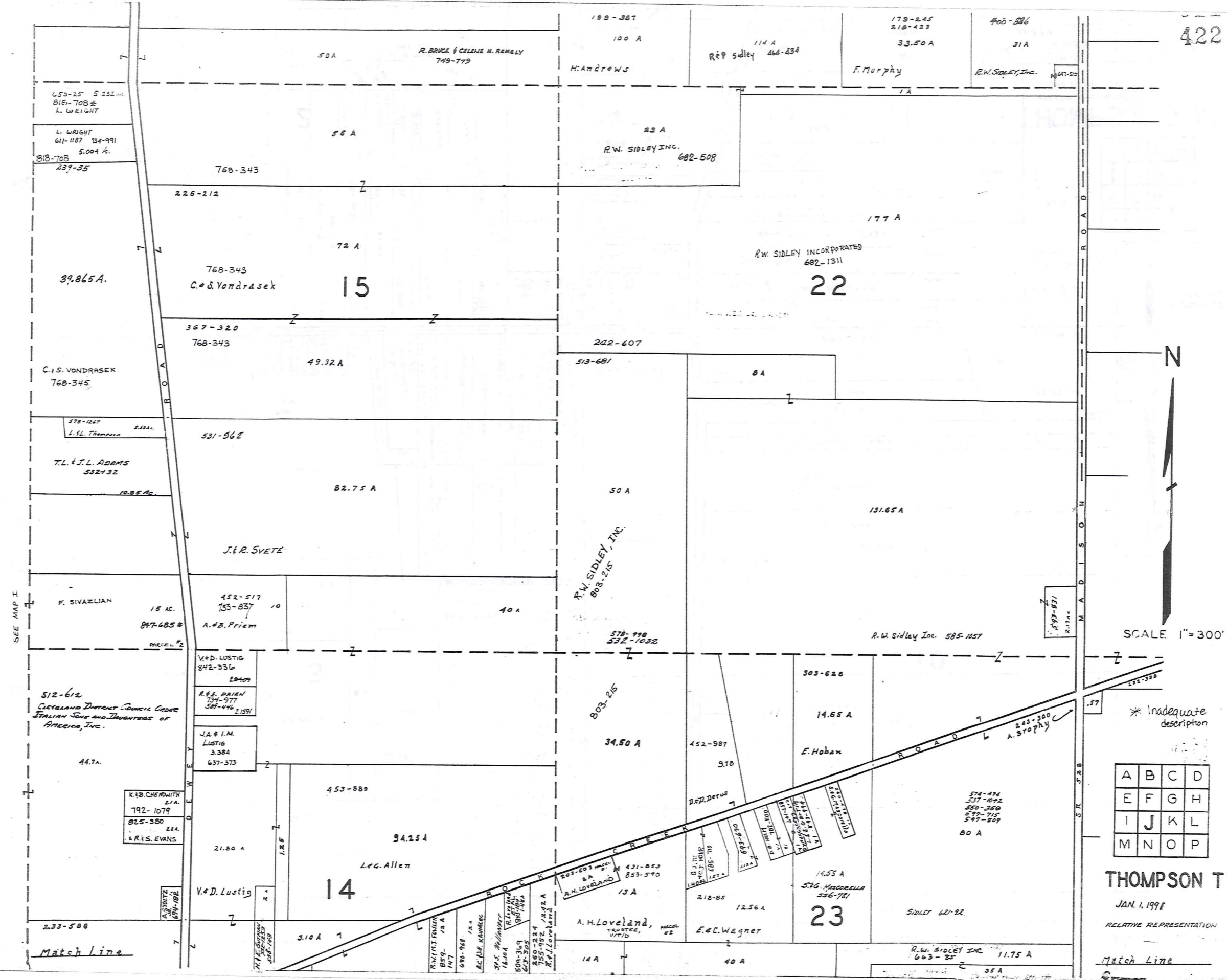
SCALE 1" = 300'

A	B	C	D
E	F	G	H
I	J	K	L
M	N	O	P

THOMPSON TWP.
RELATIVE REPRESENTATION
JANUARY 1, 1991

195-333 791-227
H. HOSTA
35.97 A Match Line 421

Match Line



SCALE 1" = 300'

* Inadequate description

A	B	C	D
E	F	G	H
I	J	K	L
M	N	O	P

THOMPSON TWP

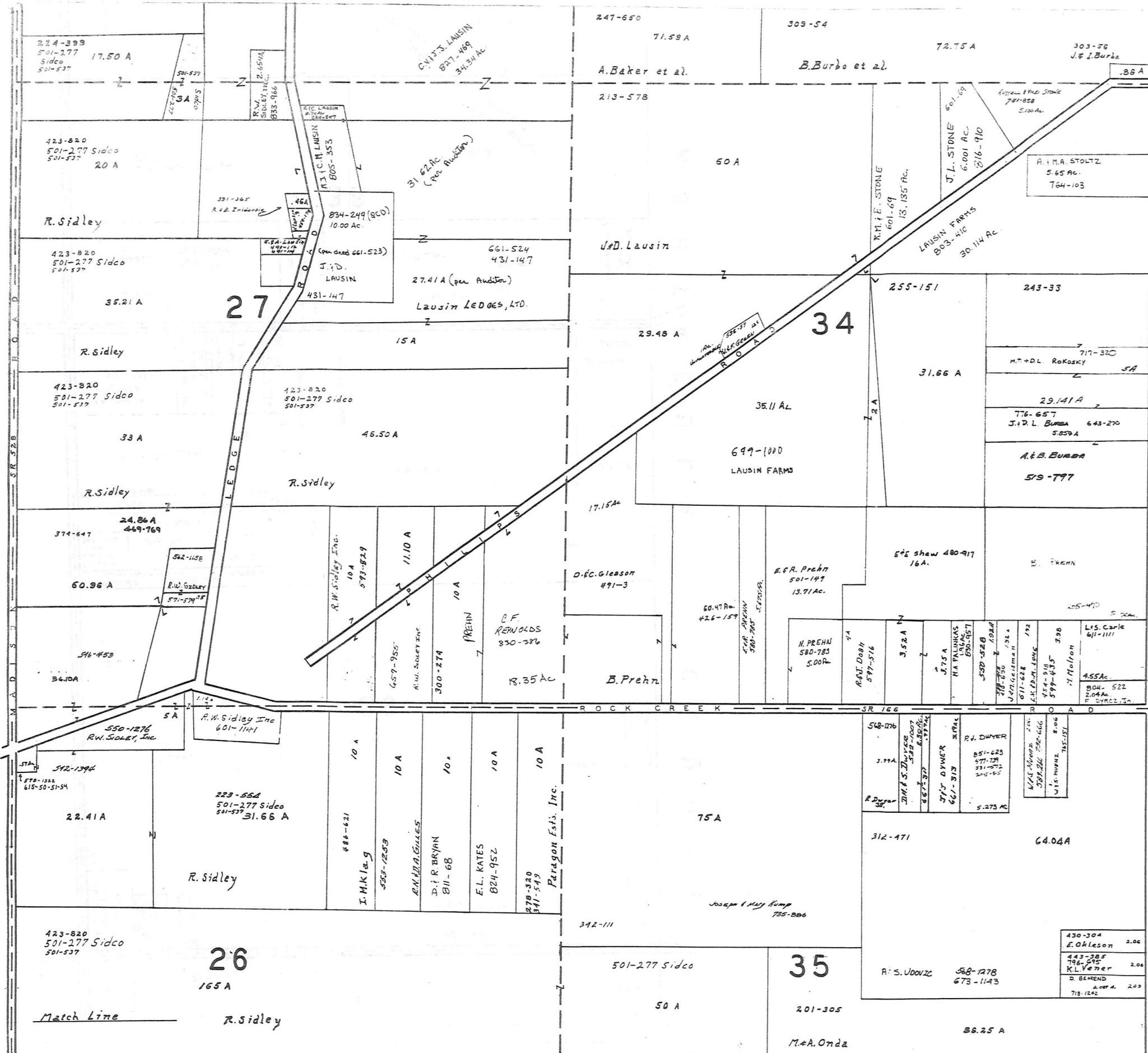
JAN. 1, 1991

RELATIVE REPRESENTATION

Match Line

SEE MAP I

Match Line



SCALE 1"=300'

A	B	C	D
E	F	G	H
I	J	K	L
M	N	O	P

THOMPSON TWP.

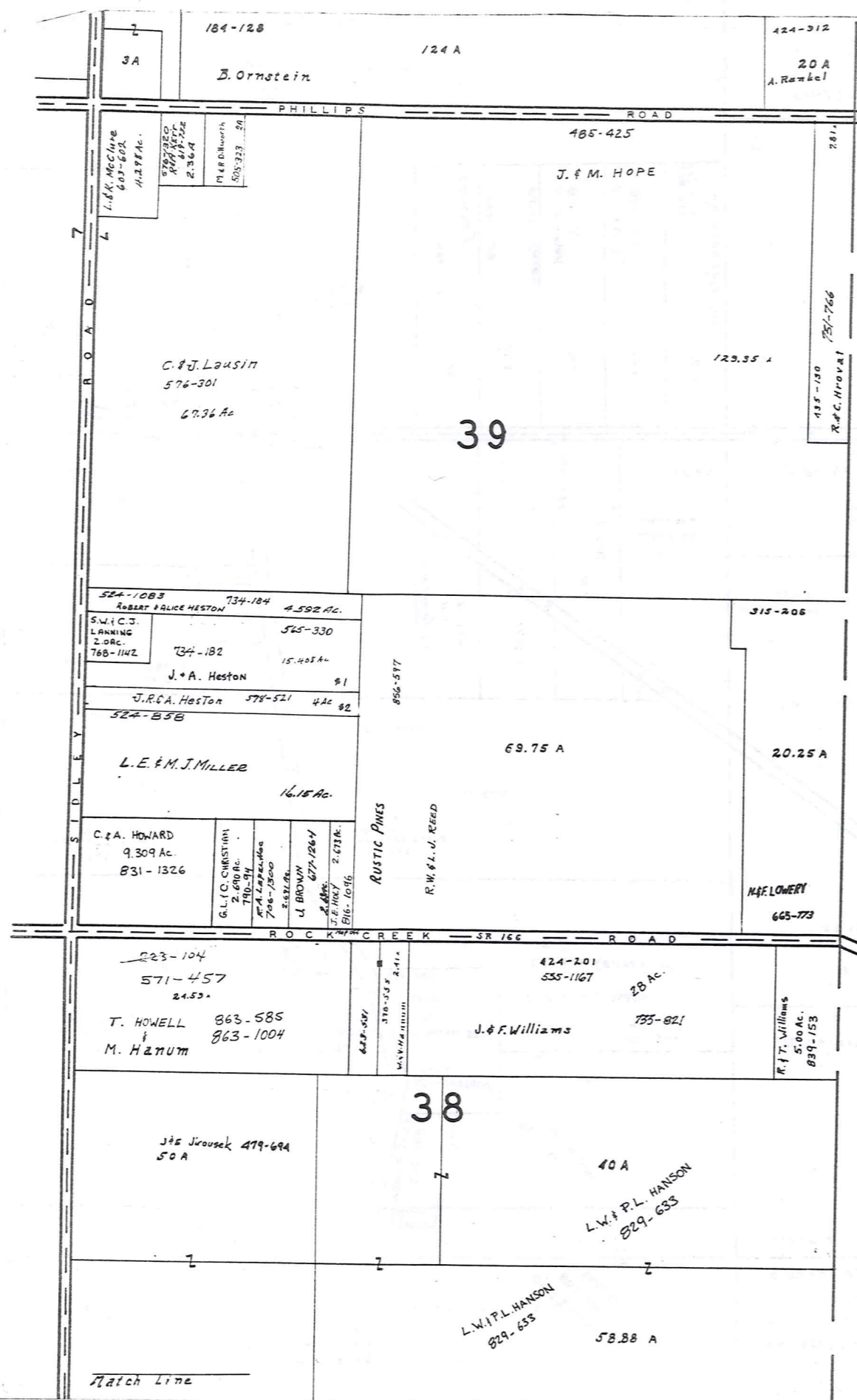
JAN 1, 1993

RELATIVE REPRESENTATION

423

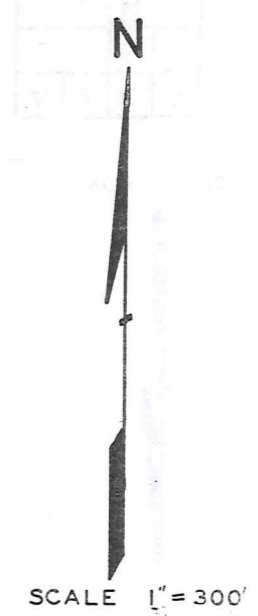
Match Line

Match Line



A S H T A B U L A C O U N T Y

* Inadequate description

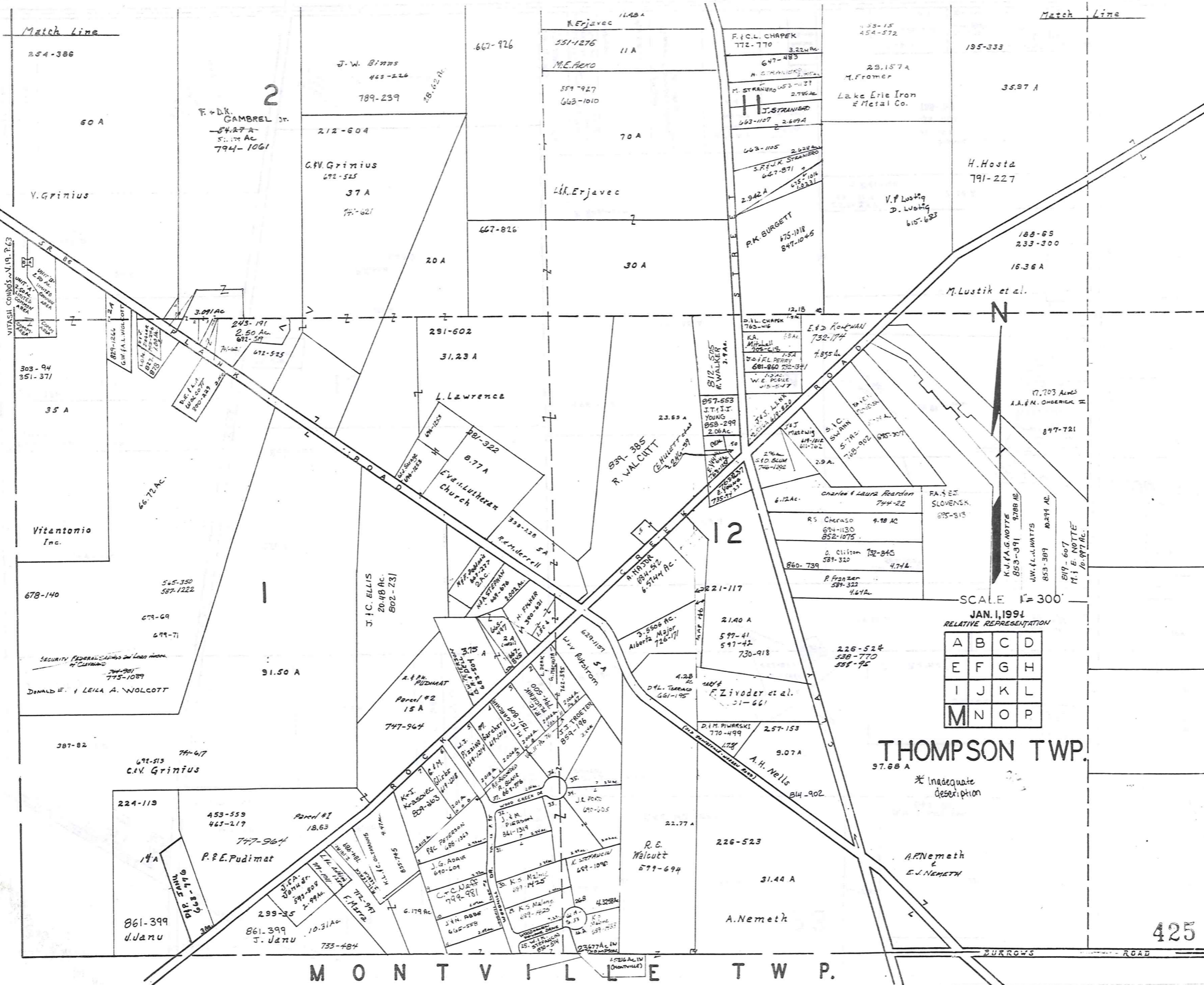


JAN. 1, 1996
RELATIVE REPRESENTATION

A	B	C	D
E	F	G	H
I	J	K	L
M	N	O	P

THOMPSON TWP.
Match Line

L A K E C O U N T Y



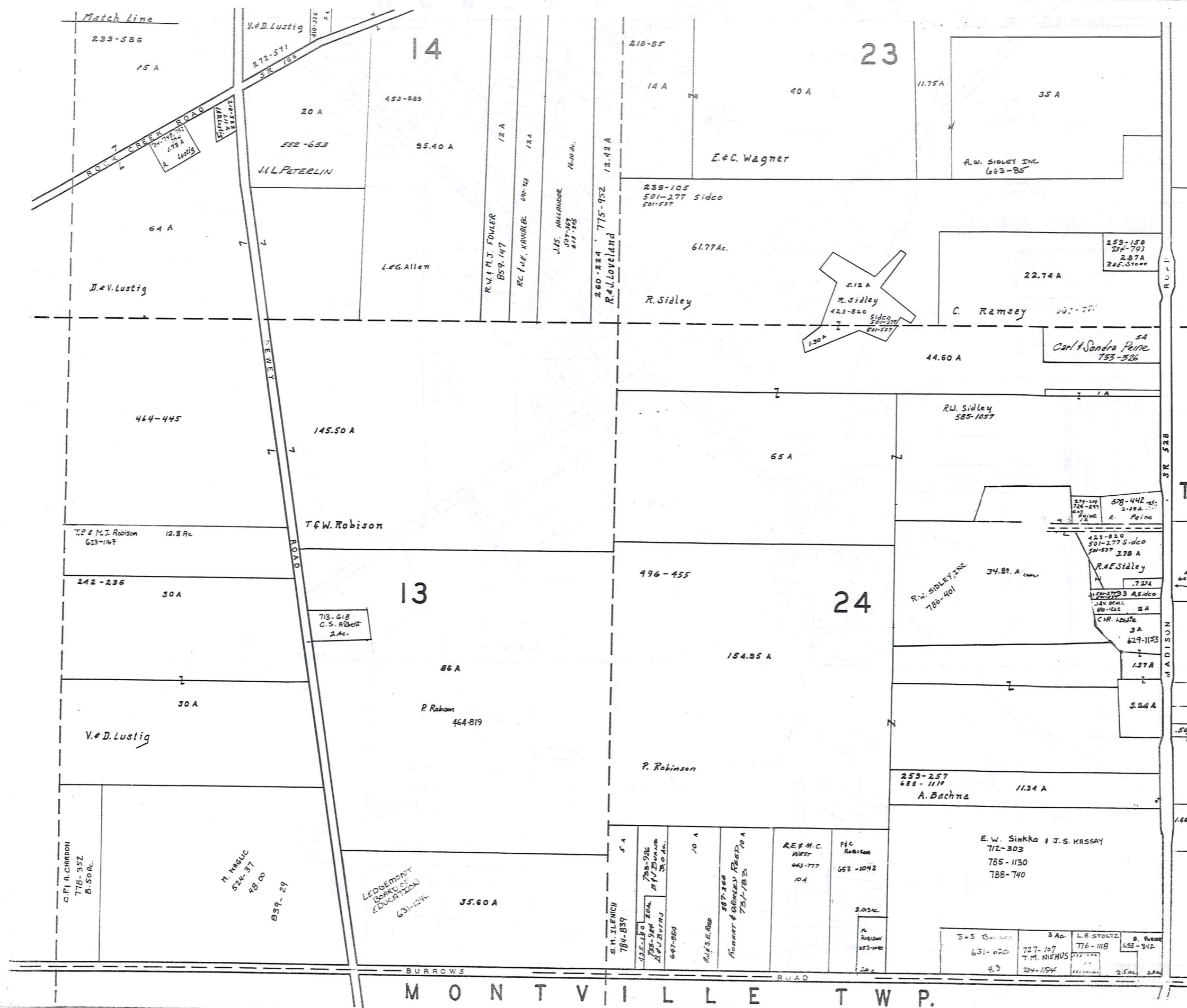
SCALE 1" = 300'

JAN. 1, 1994
RELATIVE REPRESENTATION

A	B	C	D
E	F	G	H
I	J	K	L
M	N	O	P

THOMPSON TWP.
97.68 A

* Inadequate description



Match line N 426

SCALE 1" = 300'

JAN 1, 1991

A	B	C	D
E	F	G	H
I	J	K	L
M	N	O	P

THOMPSON TWP.

RELATIVE REPRESENTATION

* Inadequate description

MONTVILLE TWP.

Match Line

Match Line

26

35

38

423-820
501-277 Sidco
501-537

501-277 Sidco
501-537

M. Onda ET AL.
520-838
532-356

R. Sidley

86.25 A

165 A

50 A

49.83 A
603-125
R. & B. Foltz

30 A

242-77

G. Ramsey

677-600

W.T. & C.
SHAGGINESSY
832-932
37.81 AC.

T. L. REQUA
T. J. BRINGER
P. N. LANDRIS
D. M. BRINGER
861-433
12.024 AC.

591-453

254-437
722-557

J. ERIKSEN
D. A. JOHNS
807-441

0.63 A

94 A

154-142
16.35 A
Kennemetal Rod & Gun Club

J. Rulli
672-807

131.55 AC.

300-143
708-380 795-1006
N. J. D mukaitis
9.62 A

37

224-6
234-169
26.30 A

711-931

E. Barnum et al.

A. L. JUHAS
D. KOCIS
C. L. ANDERSON
K. TUTTLE
819-266

36

20 A

427-814
661-711* (TOTALING
172 TAX DUPLICATE)

711-931

60.92 A

25.50 A

106.50 A

591-771 235 A
S. A. BOHICK
2 A
G. MAYER 855-629

25

424-583 *

711-931

752-210 *
PETER R. TICKEL
43.13 A

74.59 A

631-347

R. F. S. TUPNER

701-1393

5.176 AC.

D. W. & G. BREHM
550-1241
20.00 AC.
673-676

356-316
5 A

35 A

J. Yelcho

F. S. ZIMMEL
613-977

P. R. TICKEL

901-1985

C. S. LUEBKING
806-758

B. O. WHITE
673-930

713-113

12023 AC.

L. E. SCHMID
589-971

6007 AC.

G. WOLFFORD

M. Gurich 3/4 Int.
R. Gurich 1/4 Int.

239-440
5 A
H. Kimak
809-1145

14 A

755-380

W. I. M. BOWEN

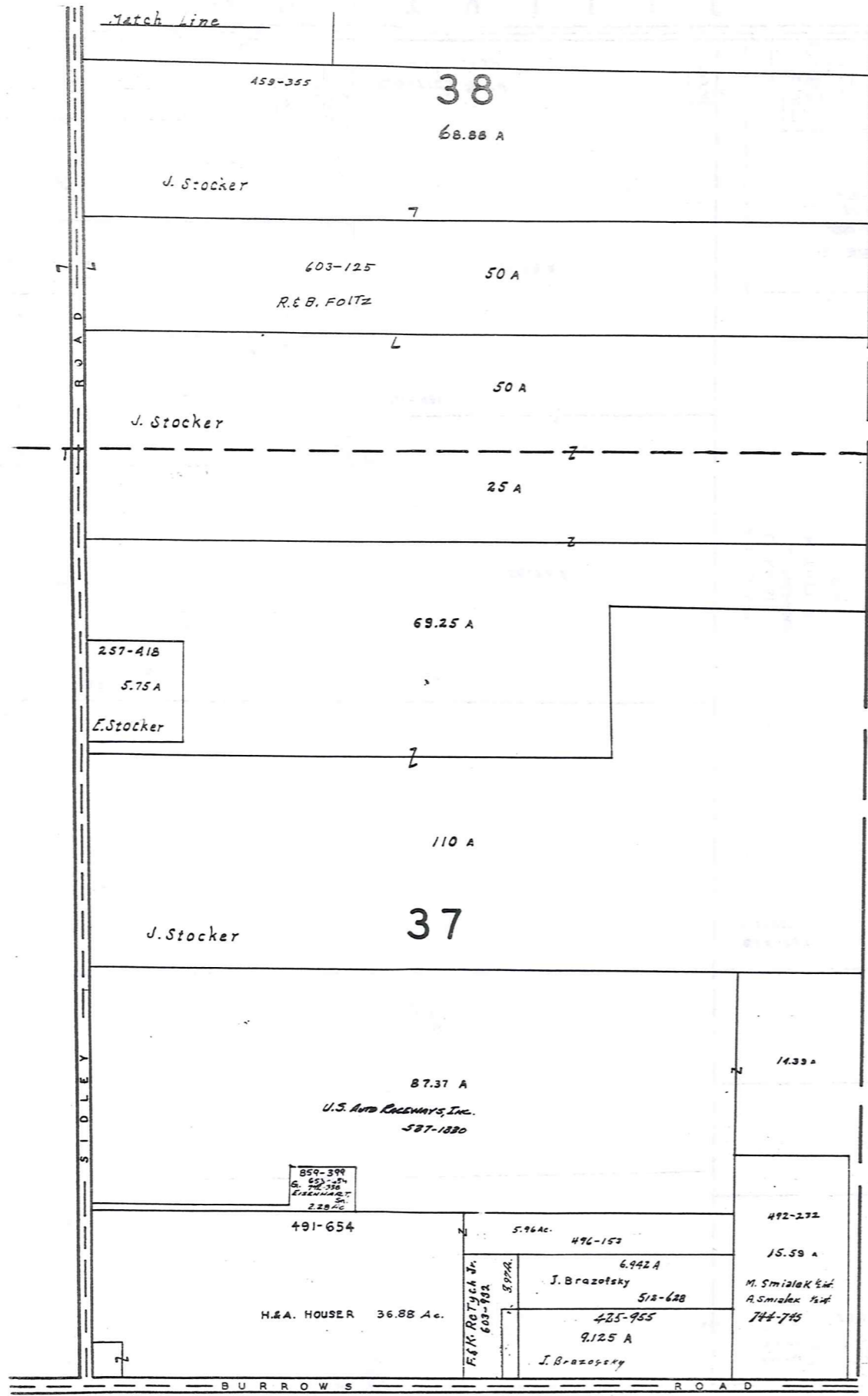
502'
67-272'
661-711*
EXCEPTING
3.50 AC. @ 45%
11.50 A*

A	B	C	D
E	F	G	H
I	J	K	L
M	N	O	P

THOMPSON TWP.

RELATIVE REPRESENTATION
* Inadequate
description

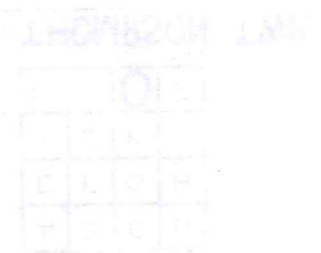
R. G. MORE
221-221
H. H. ST.
C. C. SEEMANN
1 AC.
73-100



MONTVILLE TWP.

A S H T A B U L L A C O U N T Y

Match Line 428

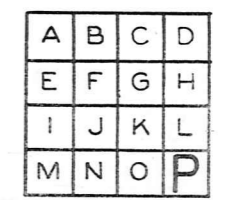


JAN. 1991

* Inadequate description

SCALE 1" = 300'

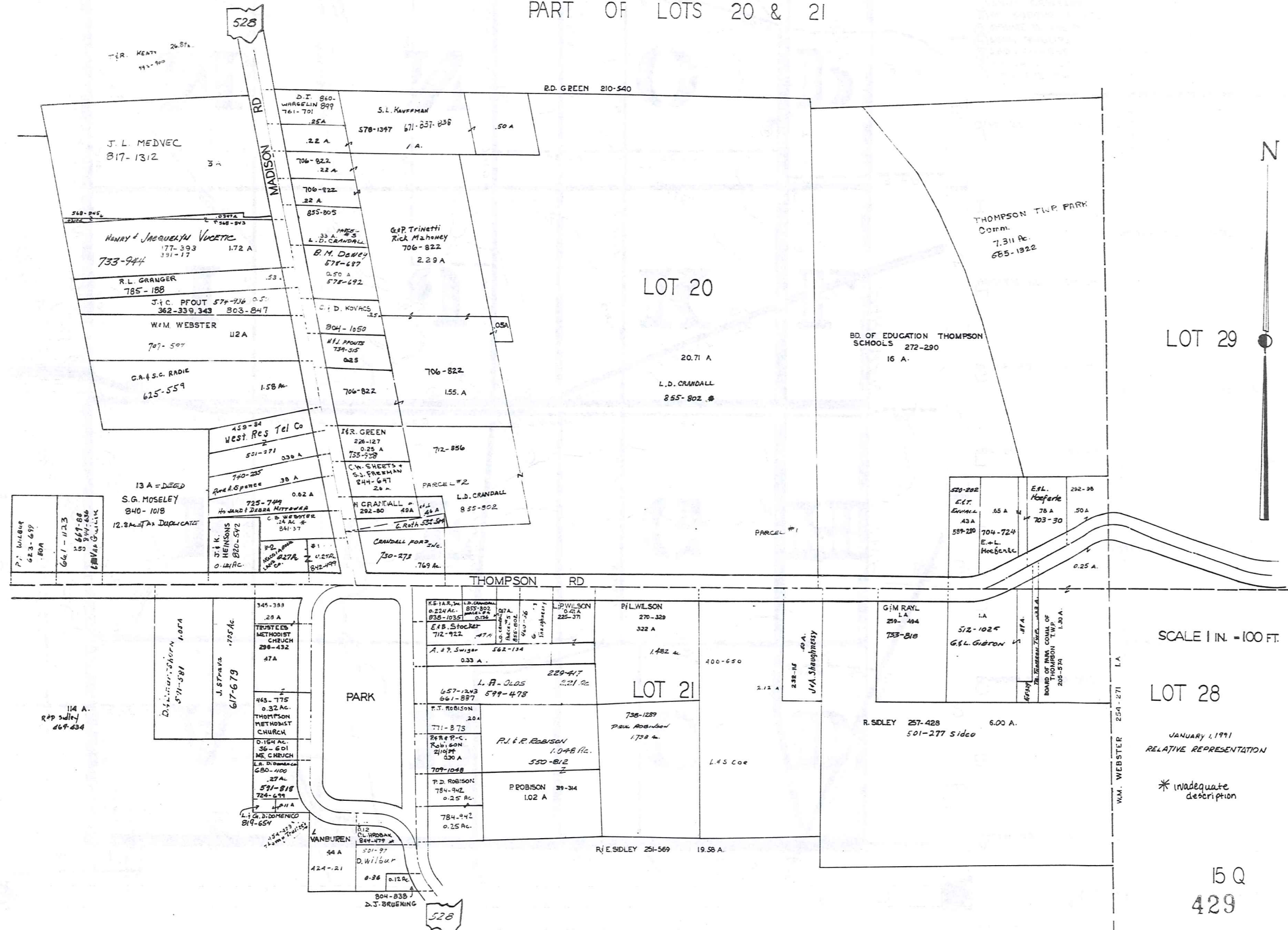
RELATIVE REPRESENTATION



THOMPSON TWP.

THOMPSON TR.

PART OF LOTS 20 & 21



Explanation and Use Sheet for Geauga County, Ohio

A

SAMPLE (PARTIAL) COUNTY INDEX MAP



Tract Lot Number

Acreage

Township Name

Village Boundary

Street Name

Village Name

Township Boundary

Owners Name

Denotes Continuous Ownership

Deed Book & Page

Map Page Number

Township Name

Village Name

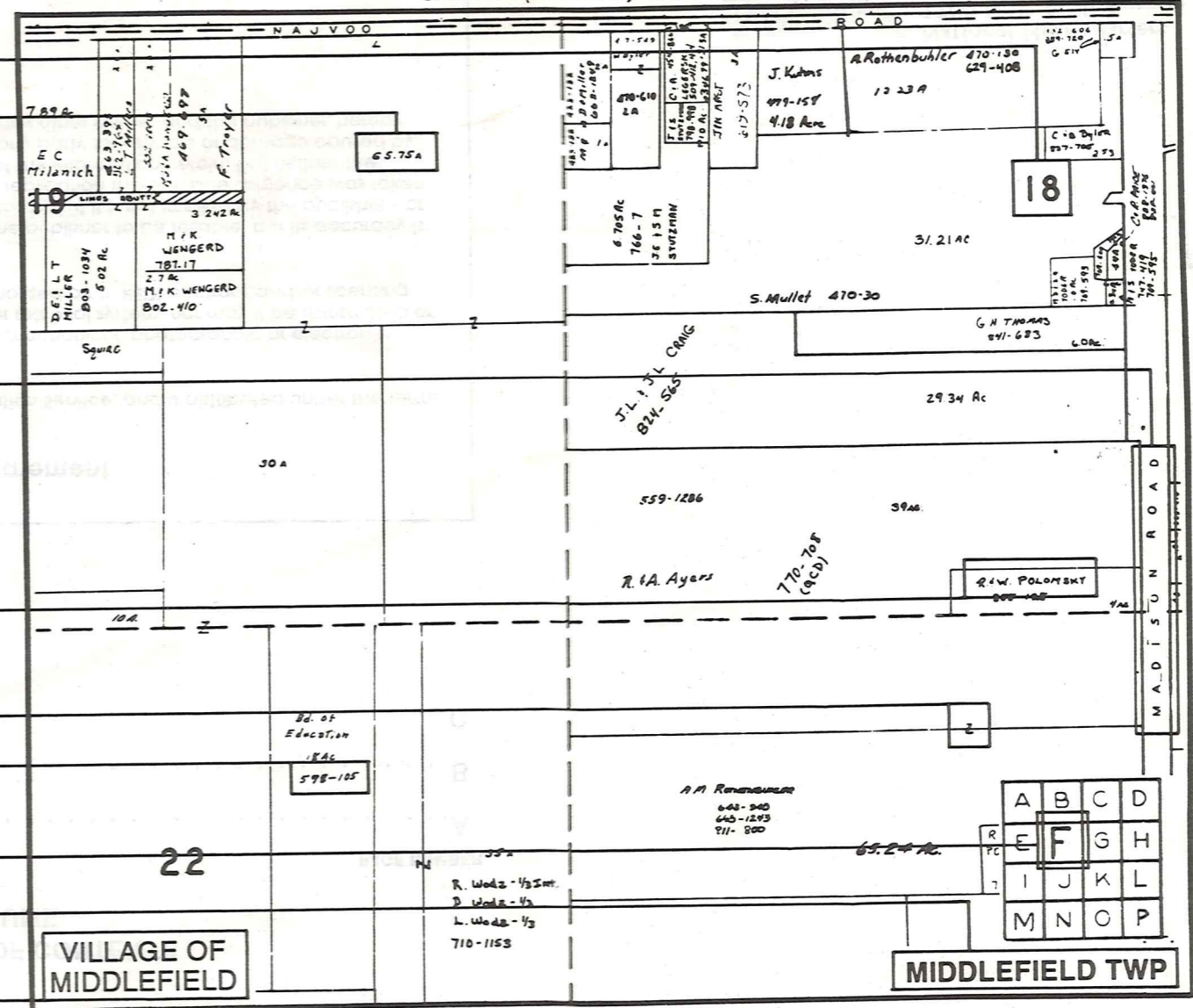
Village Boundary

Street Name

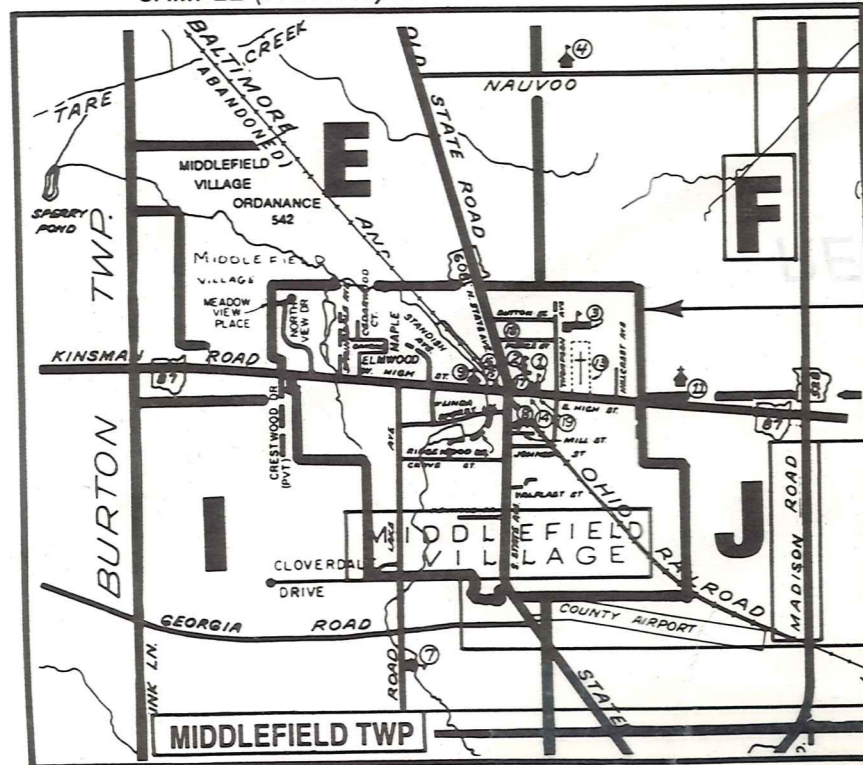
Village Name

Township Name

SAMPLE (PARTIAL) MAP PAGE



SAMPLE (PARTIAL) MUNICIPALITY INDEX MAP



USE OF THE MAP VOLUME

- LOCATE THE GENERAL AREA OF INTEREST ON THE COUNTY INDEX MAP AND NOTE THE MUNICIPALITY NAME (TOWNSHIP OR VILLAGE).
 - REFER TO THE TABLE OF CONTENTS AND NOTE THE BEGINNING ATLAS PAGE NUMBER FOR THE MUNICIPALITY OF INTEREST.
 - TURN TO THE PAGE INDICATED, ON THIS PAGE WILL APPEAR AN INDEX MAP FOR THAT MUNICIPALITY.
 - LOCATE THE GENERAL AREA OF INTEREST AND NOTE THE MAP PAGE NUMBER. THIS MAY BE EITHER A LETTER OR A NUMBER.
 - MAP PAGES ARE IN ALPHABETICAL (OR NUMERICAL) SEQUENCE FOLLOWING THE MUNICIPALITY INDEX MAP. FOLLOW SEQUENCE TO THE MAP PAGE INDICATED.
 - LOCATE SPECIFIC PARCEL OF INTEREST AND NOTE THE DESIRED INFORMATION.
- NOTE: ON SOME MAPS YOU MAY BE REFERRED TO A DETAIL SHEET SHOWING AN ENLARGEMENT OF THE AREA. THESE MAPS ARE FOUND AT THE END OF THE REGULAR MAP PAGES IN EACH MUNICIPALITY IN EITHER ALPHABETICAL OR NUMERICAL SEQUENCE.
- NOTE: CHARDON VILLAGE HAS TITLE SHEETS. TO LOCATE OWNERS NAME, NOTE THE PARCEL NUMBER, REFER TO THE TITLE PAGE FOLLOWING THE MAP OF INTEREST, FOLLOW NUMERICAL SEQUENCE TO THE PARCEL NUMBER OF INTEREST AND NOTE THE DESIRED INFORMATION. IN ALL OTHER MUNICIPALITIES THE OWNERS NAME APPEARS ON THE MAP PAGE.